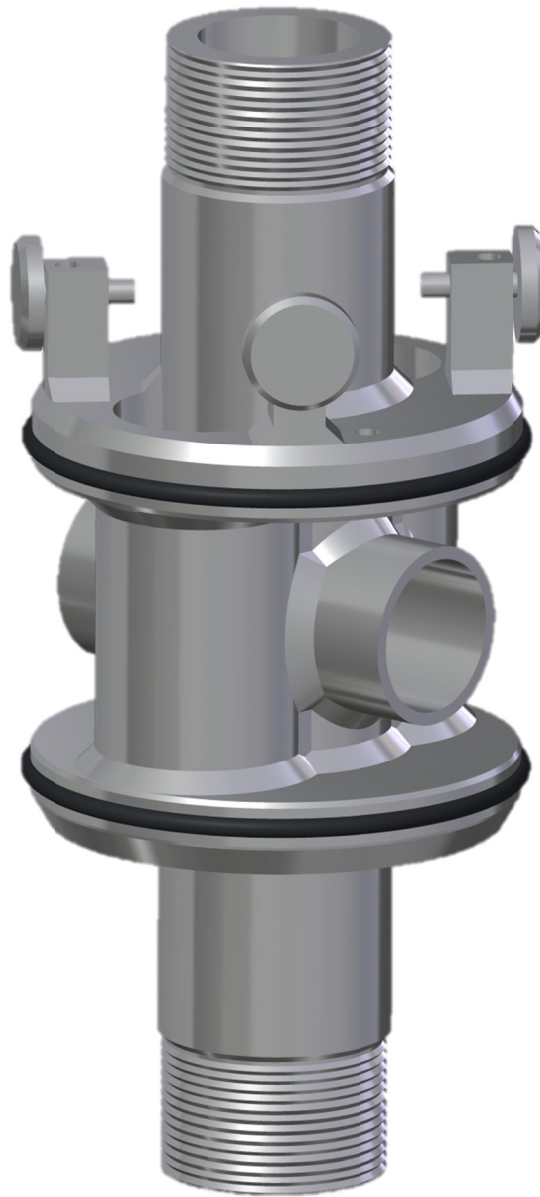




## Deep Well (DW) Pitless Spool



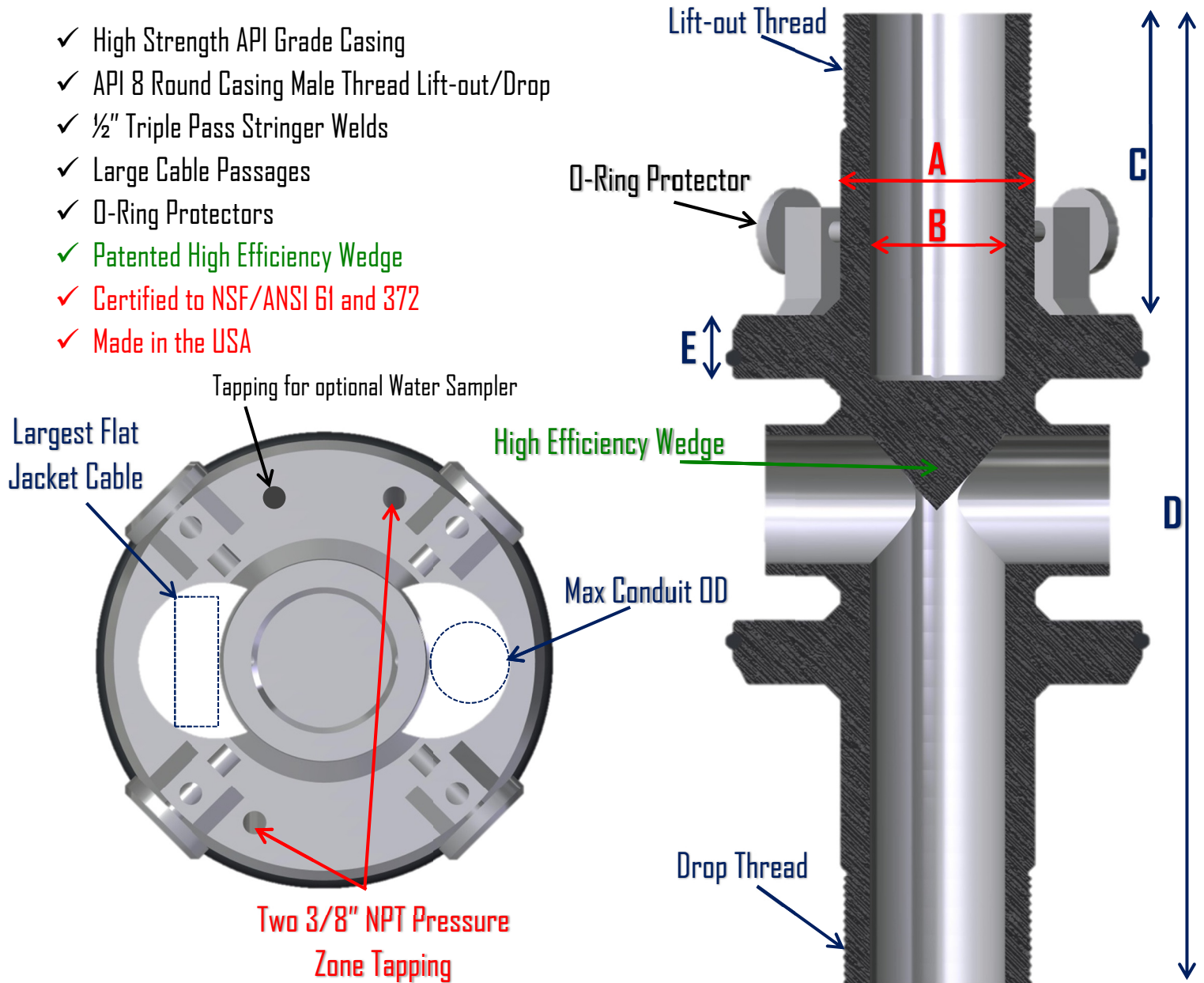
133 Enterprise Street  
Evansville, WI 53536  
(800) 356-5130



# The Monitor Deep Well (DW) Pitless Spool

Monitor® is proud to unveil its new line of DW Pitless Spools. The DW Pitless has over twice the load capacity of a standard Pitless Spool. The Robust design includes the following standard features:

- ✓ High Strength API Grade Casing
- ✓ API 8 Round Casing Male Thread Lift-out/Drop
- ✓ ½" Triple Pass Stringer Welds
- ✓ Large Cable Passages
- ✓ O-Ring Protectors
- ✓ Patented High Efficiency Wedge
- ✓ Certified to NSF/ANSI 61 and 372
- ✓ Made in the USA



Well Casing Diameter	A	B	C	D	E	Lift-out/ Drop Thread	Largest Flat Jacket Cable	Max Conduit OD
8"	4.5"	3.15"	6.97"	22.5"	1.5"	4.5" Casing Short Thread	250 mcm (.92" x 2.8")	1.75"
10"	5.60"	4.31"	7.19"	25.5"	1.5"	5.5" Casing Short Thread	350 mcm (1.03" x 3.13")	1.98"
12"	5.60"	4.31"	7.57"	27.0"	1.75"	5.5" Casing Short Thread	350 mcm (1.03" x 3.13")	1.98"
12"	7.0"	6.09"	7.57"	27.0"	1.75"	7" Casing Short Thread	350 mcm (1.03" x 3.13")	1.71"

**\*Additional Sizes Available upon request**