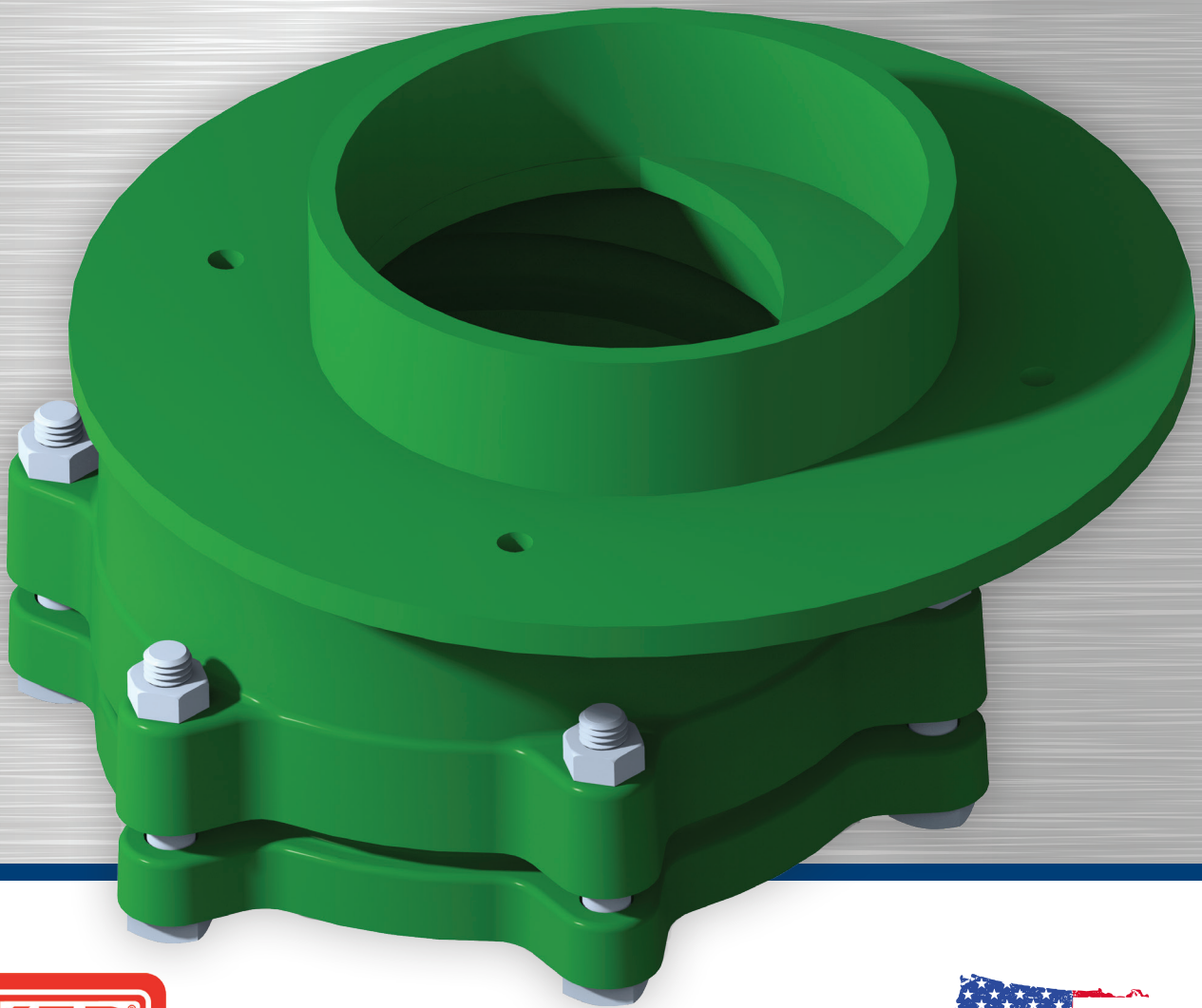




## OFFSET HAND PUMP FLANGE PART NO. 660SMP



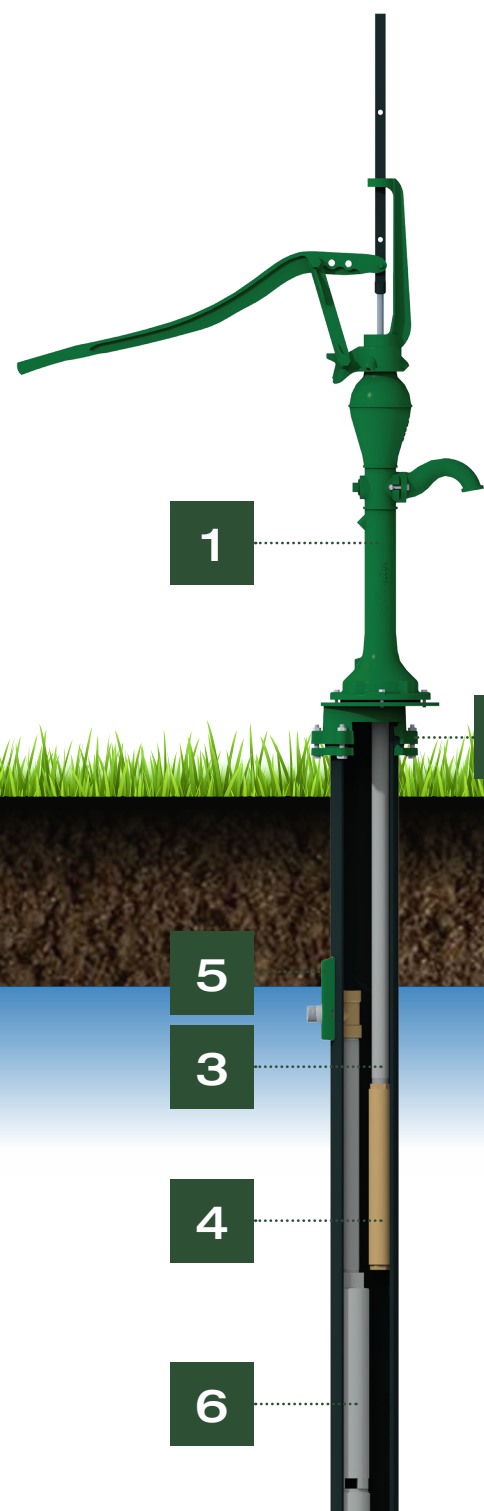
133 Enterprise Street  
Evansville, WI 53536  
(800) 356-5130



Made in the U.S.A.

# THE MONITOR® OFFSET HAND PUMP FLANGE

Monitor® is proud to unveil a **NEW** innovative product to our portfolio of hand pumps. The Offset Hand Pump Flange provides homeowners the ability to incorporate both a submersible pump and hand pump cylinder within a single six inch well. The offset allows the brass cylinder to bypass the pitless adapter and set above the 4" submersible well pump. The design incorporates a watertight well case seal, utilizing the Monitor® Kwikonect technology, protecting the well from surface water contamination.



Frost Line

## FEATURES/BENEFITS

- The Monitor® Hand Pump serves as a manual backup in the event the submersible pump is unable to operate
- **Never go without water during the next power outage**
- Save thousands of \$\$\$ by avoiding a secondary well for the hand pump
- Design is compatible with both 1" + 1.25" Monitor® Pitless adapters
- Designed, cast, and fabricated in the USA – Evansville, WI
- Made with heavy duty Ductile Iron & Steel
- Compatible with Monitor® "HD" Force & Drinking Fountain Pumps
- Avoid a costly generator that requires fuel storage; leading to "bad fuel" that prevents operation

### PARTS BREAKDOWN

P/N	Description
1. 11HD	Force Hand Pump
2. 66OSMP	Offset Hand Pump Flange
3.	1-1/4" Drop Pipe & Pump Rod
4. 00003	2" Brass Cylinder
5. 6125FBEZLF	1-1/4" Weld-On Adapter
6.	4" Submersible Pump (Actual OD 3.90")

### COMPATIBLE PITLESS ADAPTERS

BEZ Pitless Adapters		Brass Slide Type Pitless Adapters	
Clamp-On	Weld-On	1"	1.25"
61CBEZLF	6123BEZLF	1BTLF	125BTLF
6125CBEZLF	6123FBEZLF	1BTBLF	125BPTLF
	6125BEZLF	100BTLF	1251BTLF
	6125FBEZLF	1BPTLF	
		100BPTLF	