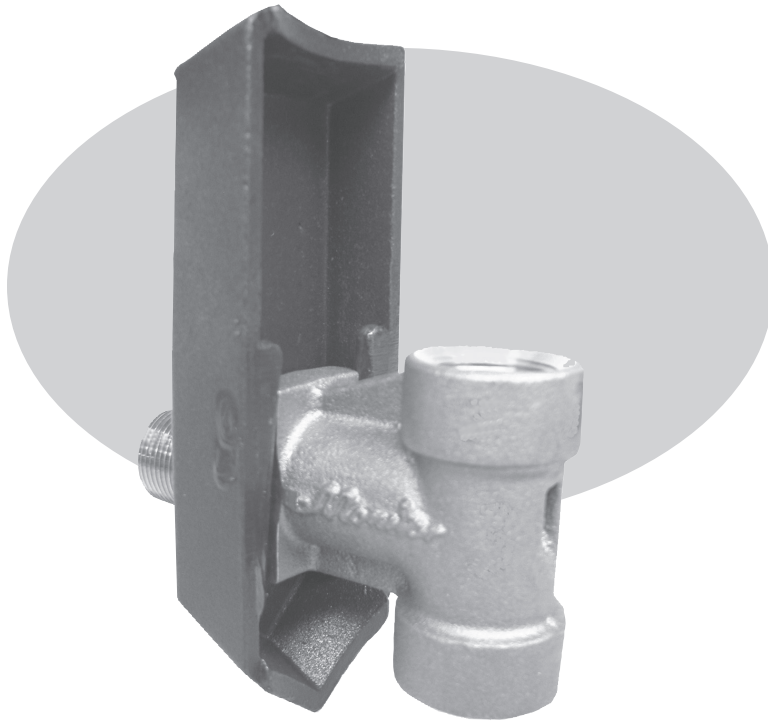




6123BEZ WELD ON PITLESS ADAPTERS



WELD ON PITLESS ADAPTER FOR 4", 5" & 6" I.D. & 7" O.D. WELLS

FEATURES

- 304 Stainless Steel 1" Male NPT Nipple
- 304 Stainless Steel locating support pins
- Steel housing has taper at the bottom to allow for easy bottom side welding
- Positive stop feature on interior of housing assures proper o-ring seal
- C84400 Red Brass 1" drop fitting with female NPT connection
- Maximum safe load rating: 1600 lbs.
- Chamfered 1" pull pipe port
- Large drainage hole in backside of drop fitting to prevent chlorine build-up
- Drop fitting has long sweep 90 degree turn
- Pump is more centrally located within well
- Large neoprene o-ring seal
- Factory pressure test to 100 lbs.