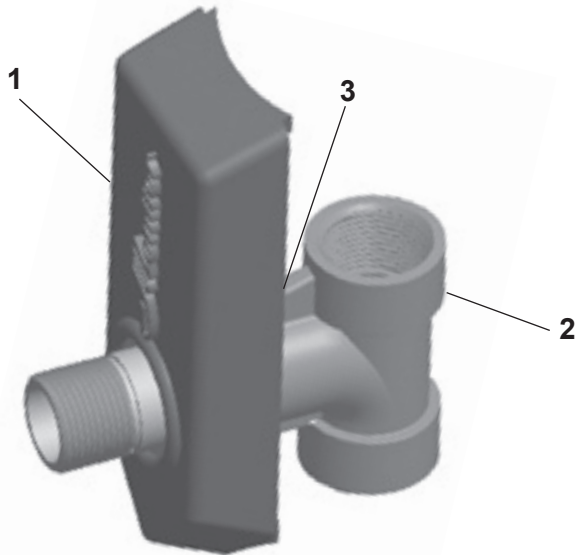




WELD ON PITLESS ADAPTERS

6123BEZ Weld On Pitless Adapter Installation Instructions



- Level Casting on Pipe
- Mark outside edges of casting
- Mark 1/4" inside right and left side only
- Cut left and right sides intersecting with top and bottom lines
- Check hole size with brass fitting before welding to be sure it is big enough

Model No.			6123BEZ
Item	Qty	Description	Ord. No.
1	1	Weldment	C6W
2	1	Adapter	BH61M
3	1	O-ring	PL3